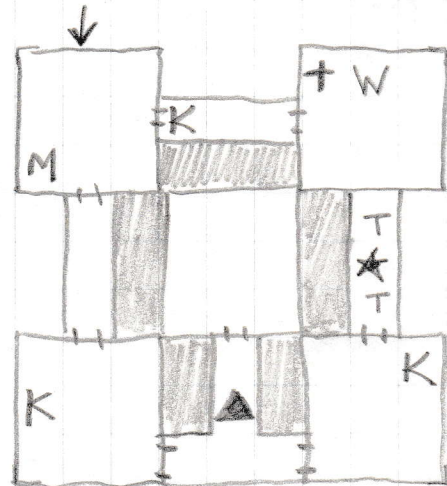
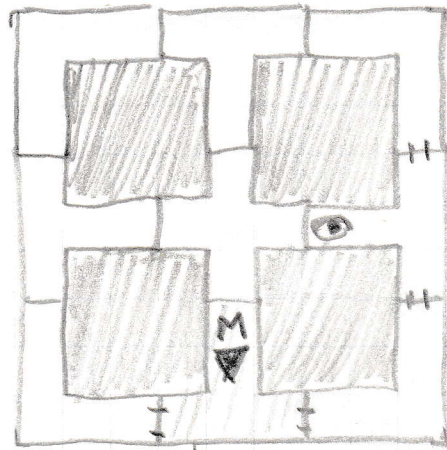


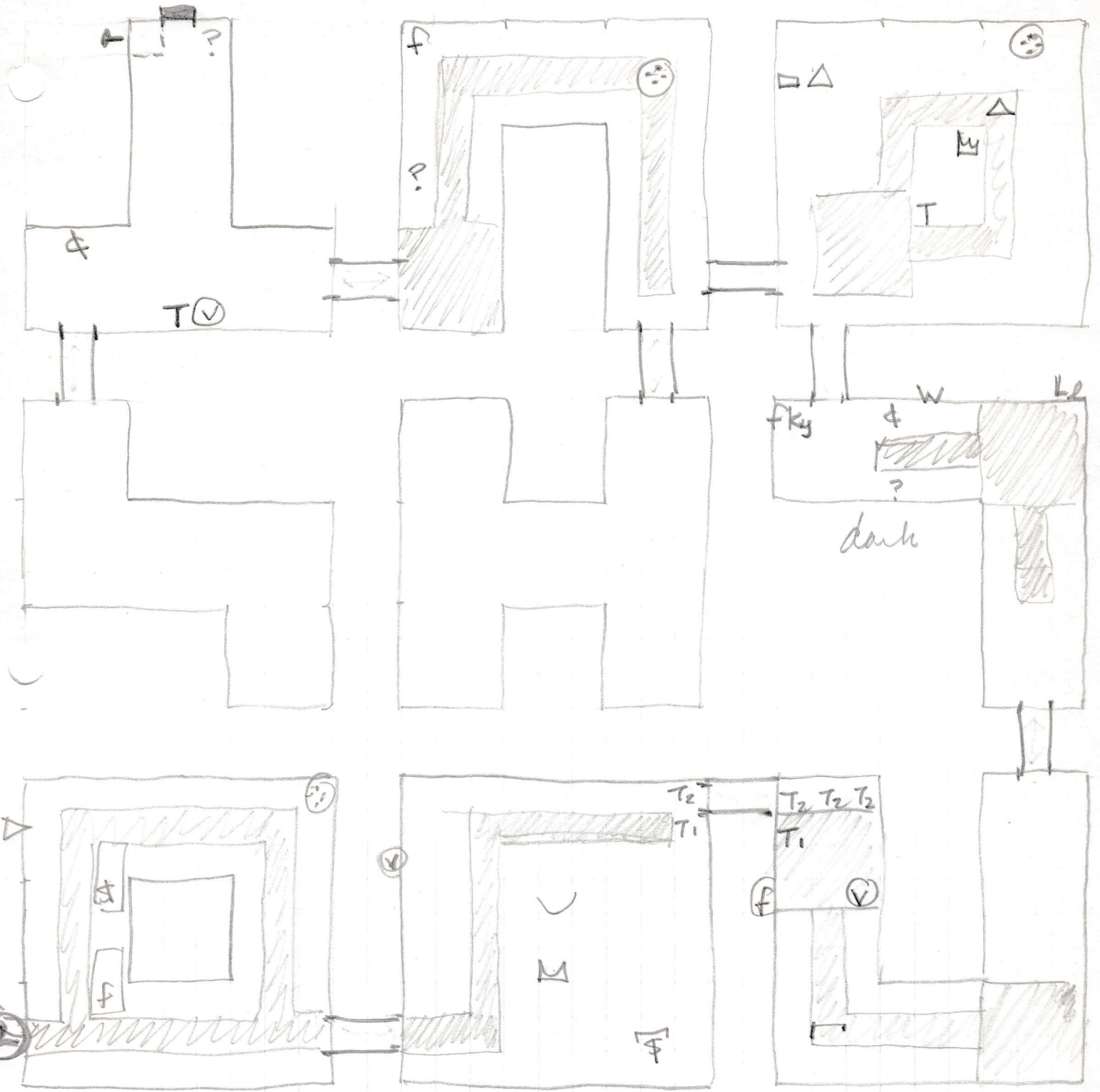
# Rimm Fortress - Overview

MYSTIC TOWERS

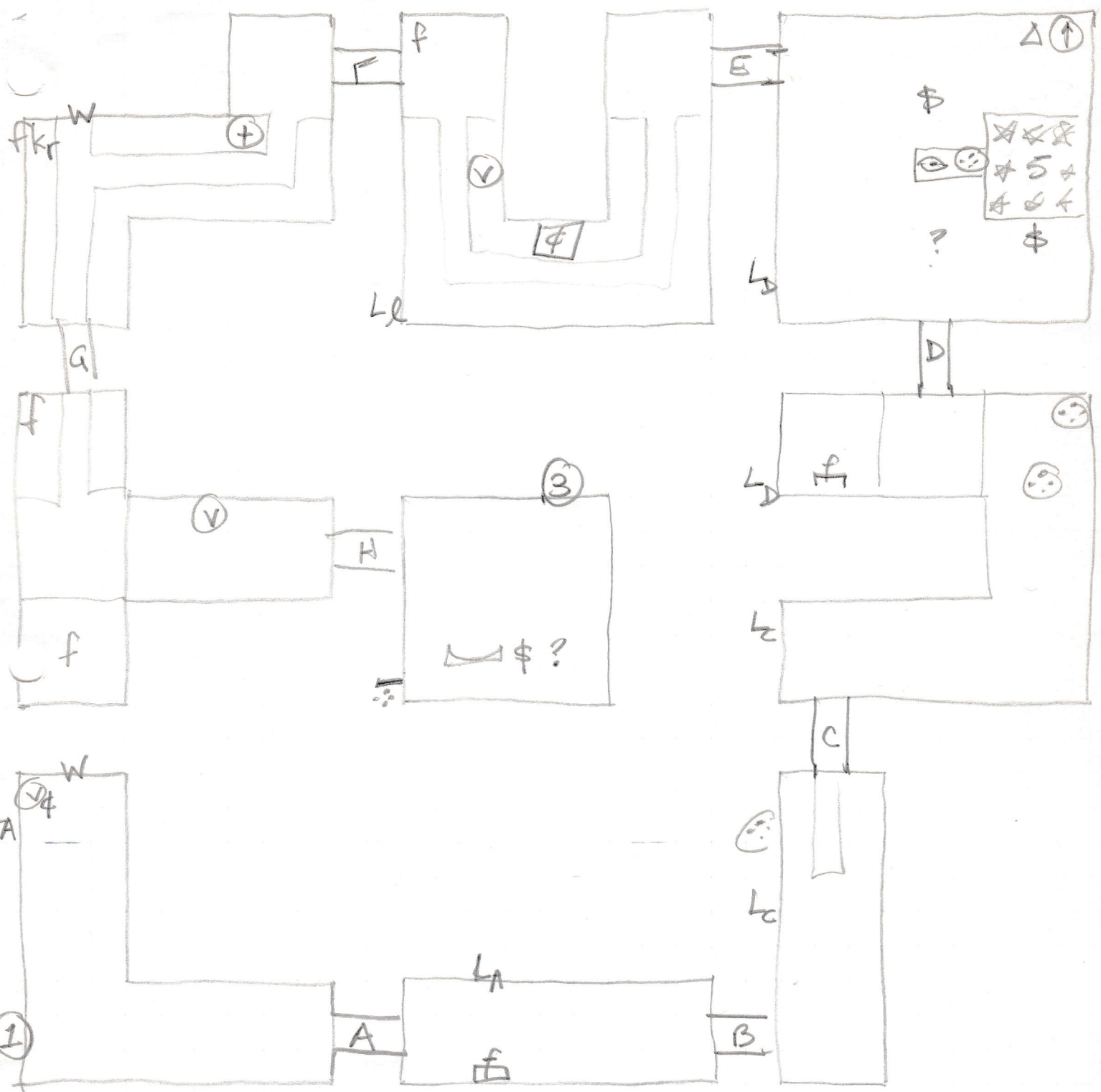


FLOOR 1

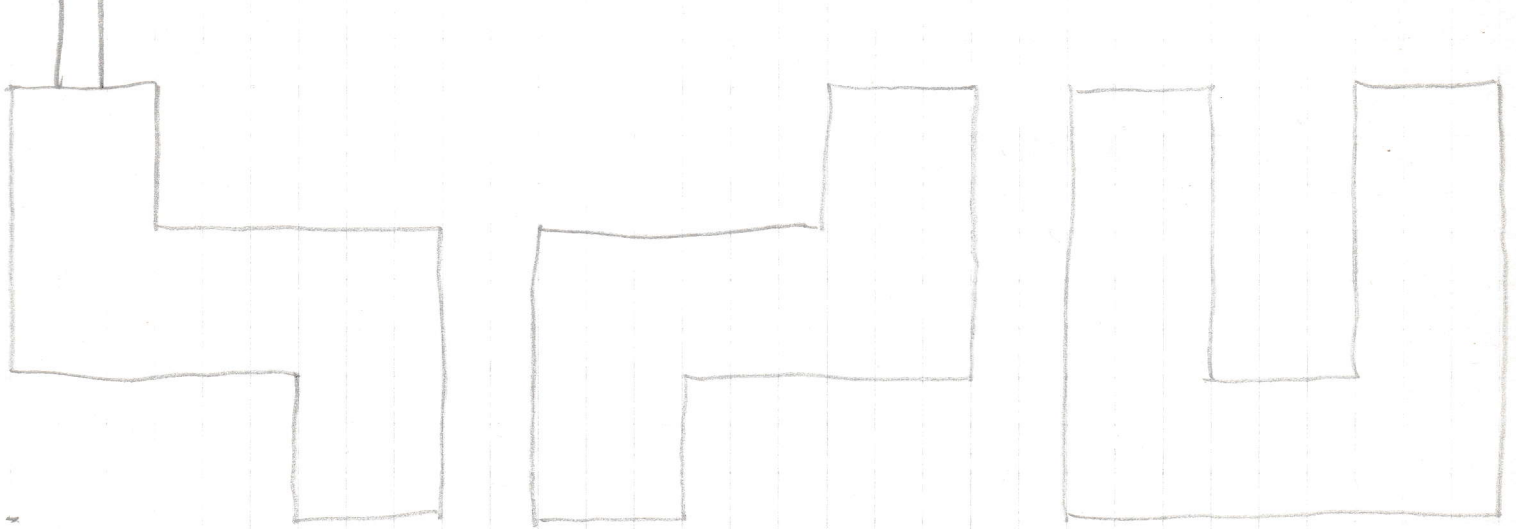
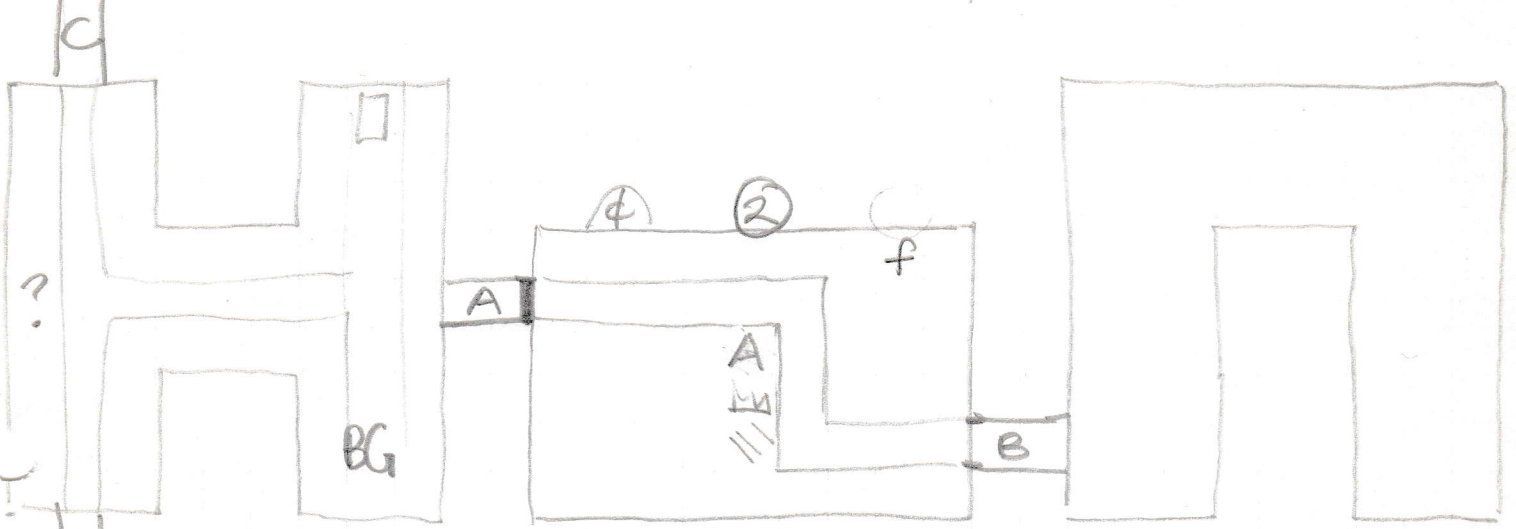
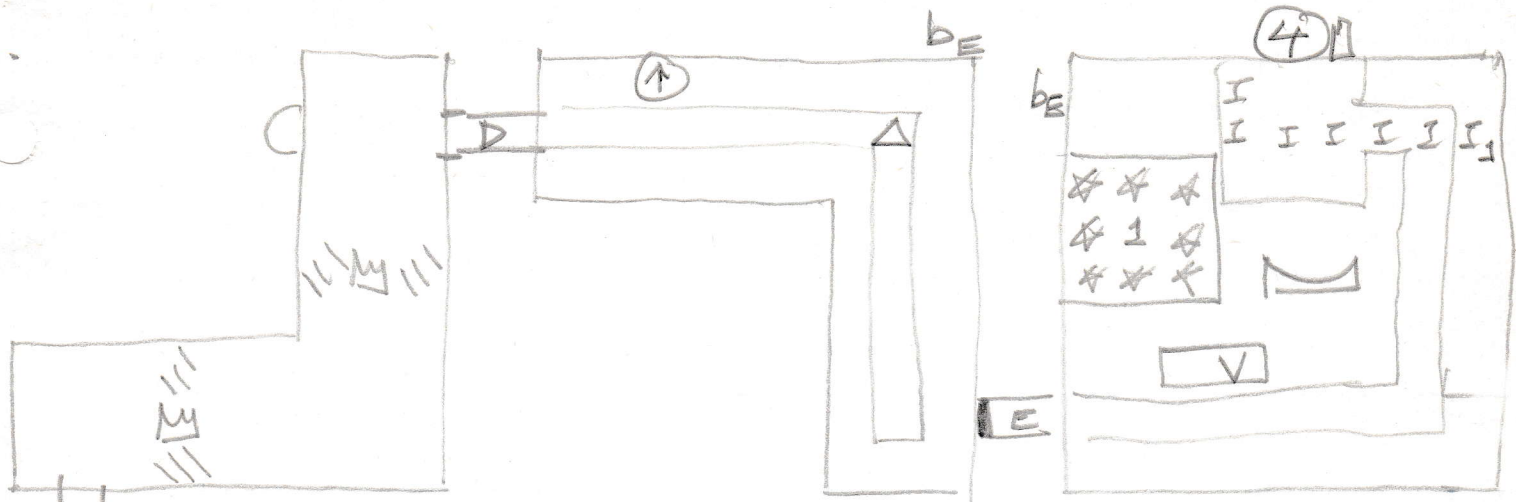
Rimm Tower Floor 1



Rimm Tower Floor 2

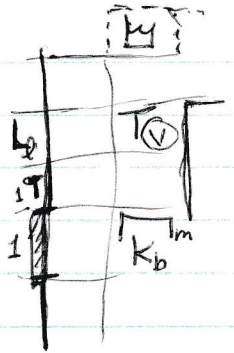


Rimm Tower, Floor 3





~~K~~<sub>b, y, g, ...</sub> Key blue, yellow, green ...



f food ? hint  
 w water  
 L lever L<sub>e</sub> lights L<sub>1</sub> open/close door 1  
 b button

~~XXXX~~

~~XXXX~~

poison tile

m mushroom

xxx booze

Ly fire

\$ treasure & coins

~~S~~ spells

T table

I invisible barrier

~~XXXX~~

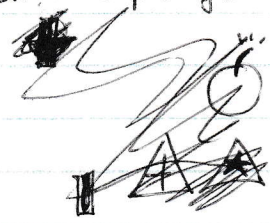
\*\* \*\* \* } teleport grid  
 \*\* (1) \*\*  
 \*\* \*\* \*

invisibility

shield ball

power ball

- mobile platform of key 1  
 immobile platform



door  
 keyhole  
 slot  
 spout

alcove



**MG** Monster Generator

Knights

- statue  
 - vase   
 - brozier   
 - hobby dragon

heal spell  
 teleport spell  
 levitate spell  
 lightning spell  
 venom spell  
 bomb  
 reveal spell  
 sulphur  
 libal